

# State of the District

**Bedford PTG**

November 8, 2007

# Topics to be Discussed

- Transition / New Configuration
- Student Transportation
- Enrollments / Projections
- Student Performance Data/AYP
- Building Measurable Goals

# Topics to be Discussed

- Improved Communications- Parent Portal
- Security Assessment
- Financial Information
- Future Planning/Challenges
- Questions

# Transition Efforts

- Administration & Staff
- Transition Advisory Committees
  - McKelvie Intermediate
  - Bedford High School
- Tours of Schools
- Parent Meetings
  - 5<sup>th</sup> / 6<sup>th</sup> Grade Parent Orientation
  - Student Orientation/Tours Gr. 7-10

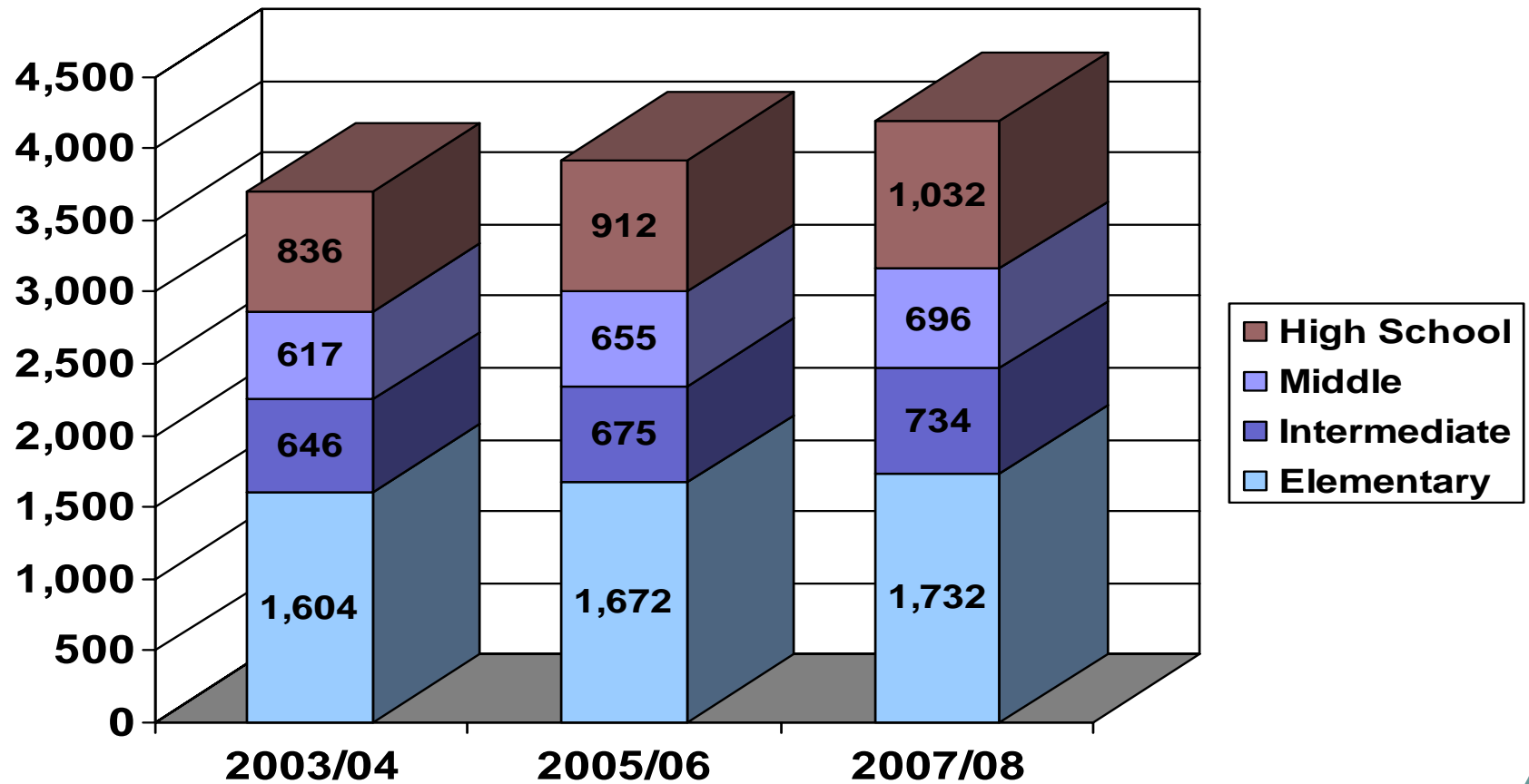
# New Configuration

- Proper use of facilities/space
  - Some programs returned to classrooms (e.g. Music @ Peter Woodbury, Memorial)
  - Specialists in more appropriate settings
- Provided additional capacity in all schools
- New school time schedules

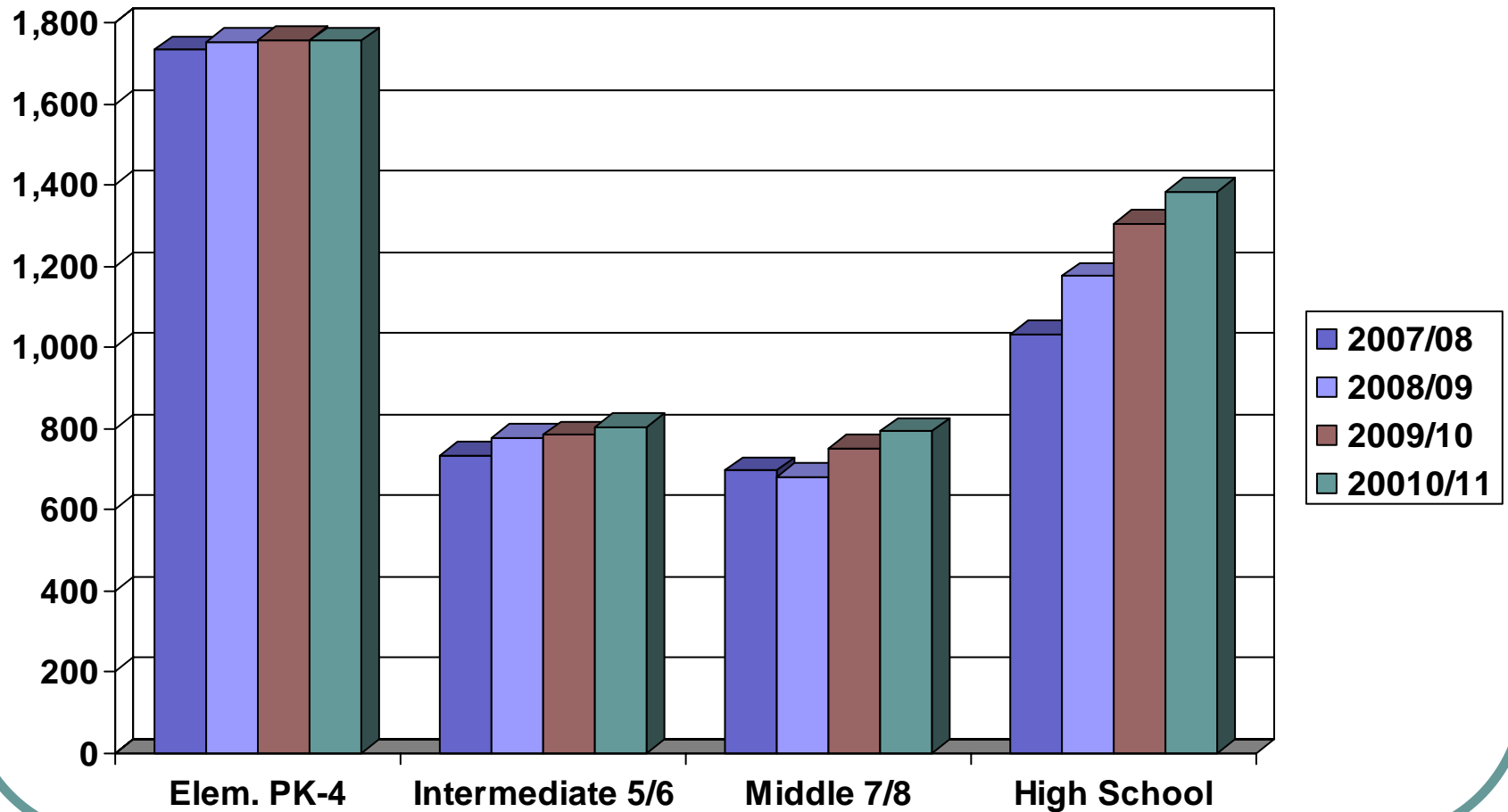
# Student Transportation

- Driver shortage
  - Delays, last minute changes to routes
- Regular meetings w/STA management to monitor service, recruitment efforts, follow through
  - Consolidated bus routes
  - Commitment to Recruitment/Retention of Drivers
    - Hired a local recruiting service/office support staff
    - More active strategies
    - Pay structure/benefits
- Improvement in service ... more predictable

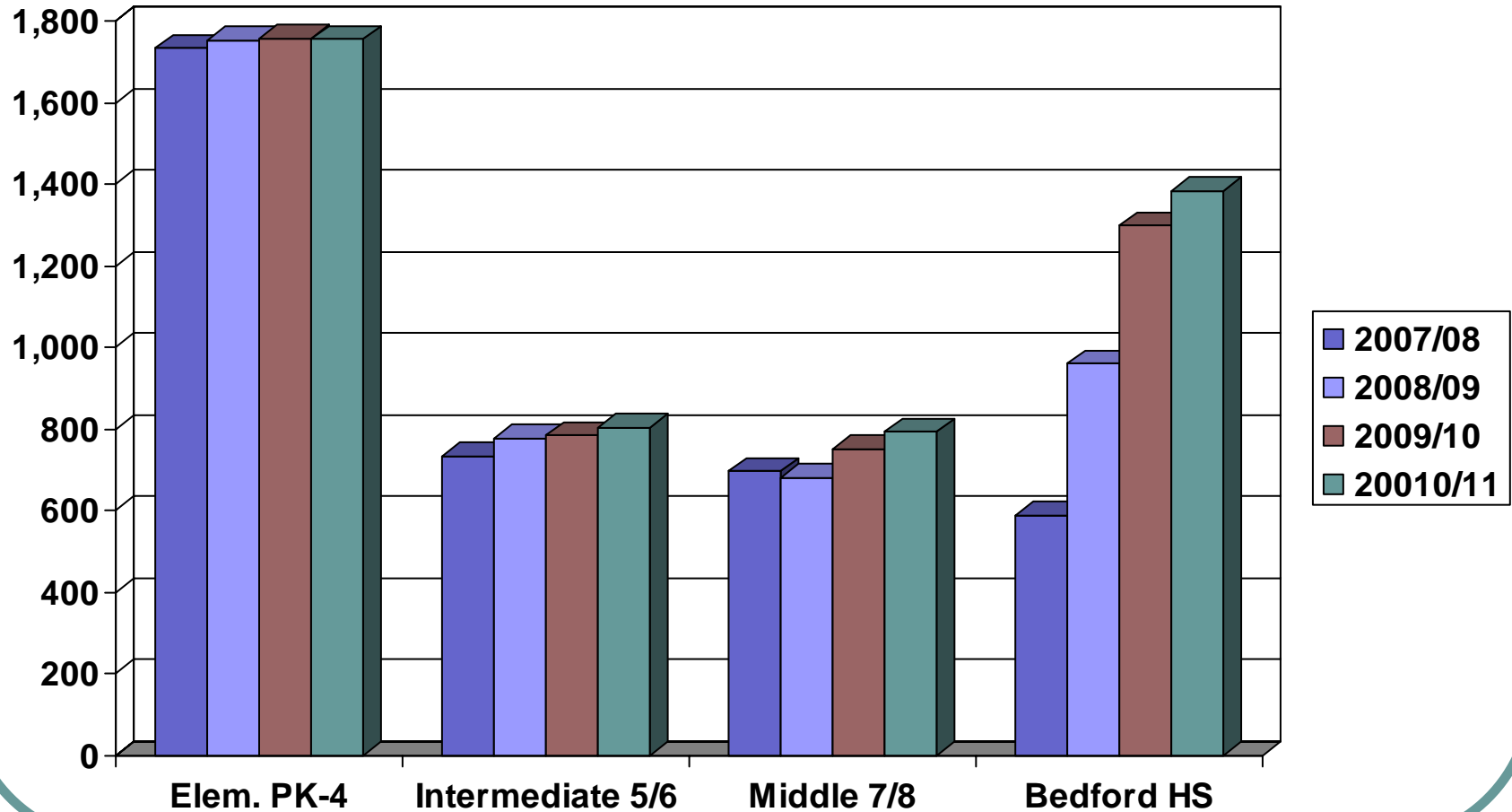
# Enrollment History



# Enrollment Projections



# Enrollment: Projections



# NWEA Assessments

- Computer-Adaptive Tests in Language Usage, Mathematics, Reading given to students in grades 3 – 8
- Helps teachers, students and parents set goals and track growth
- Measures effectiveness of instruction to challenge all students
  - Student Growth: Evaluate whether groups of students have Expected Growth, More, or Less
  - Program Evaluation: Measure impact of current / new programming

# NWEA 2006/07 Spring Assessment

## Actual Student Growth vs. National Norms

Grade	RIT Block	Language Usage	Math	Reading
Fourth	190 - 199	More Than Expected	Expected	More Than Expected
	200 - 209	More Than Expected	Less Than Expected	Expected
	210 - 219	Expected	Less Than Expected	Less Than Expected
	220 - 229	Expected	Less Than Expected	Expected
	230-239	N/A	Less Than Expected	Less Than Expected
Fifth	190-199	N/A	N/A	More Than Expected
	200 - 209	More Than Expected	More Than Expected	More Than Expected
	210 - 219	More Than Expected	More Than Expected	Expected
	220 - 229	Less Than Expected	More Than Expected	Expected
	230 - 239	Expected	More Than Expected	Less Than Expected
	240 - 249	N/A	Expected	N/A
Sixth	200 - 209	Expected	N/A	More Than Expected
	210 - 219	Less Than Expected	Expected	More Than Expected
	220 - 229	Less Than Expected	Less Than Expected	Expected
	230 - 239	Less Than Expected	Less Than Expected	Less Than Expected
	240-249	N/A	Less Than Expected	More Than Expected

# NWEA 2006/07 Spring Assessment

## Actual Student Growth vs. National Norms

Grade	RIT Block	Language Usage	Math	Reading
Seventh	200 - 209	More Than Expected	N/A	Expected
	210 - 219	More Than Expected	More Than Expected	More Than Expected
	220 - 229	More Than Expected	More Than Expected	Expected
	230 - 239	Expected	More Than Expected	Expected
	240 - 249	Less Than Expected	More Than Expected	Expected
	250 - 259	N/A	More Than Expected	N/A
Eighth	200 - 209	Expected	N/A	N/A
	210 - 219	More Than Expected	N/A	Expected
	220 - 229	Expected	Less Than Expected	Expected
	230 - 239	Less Than Expected	Expected	Expected
	240 - 249	Expected	More Than Expected	Expected
	250-259	N/A	More Than Expected	N/A
	260-269	N/A	More Than Expected	N/A

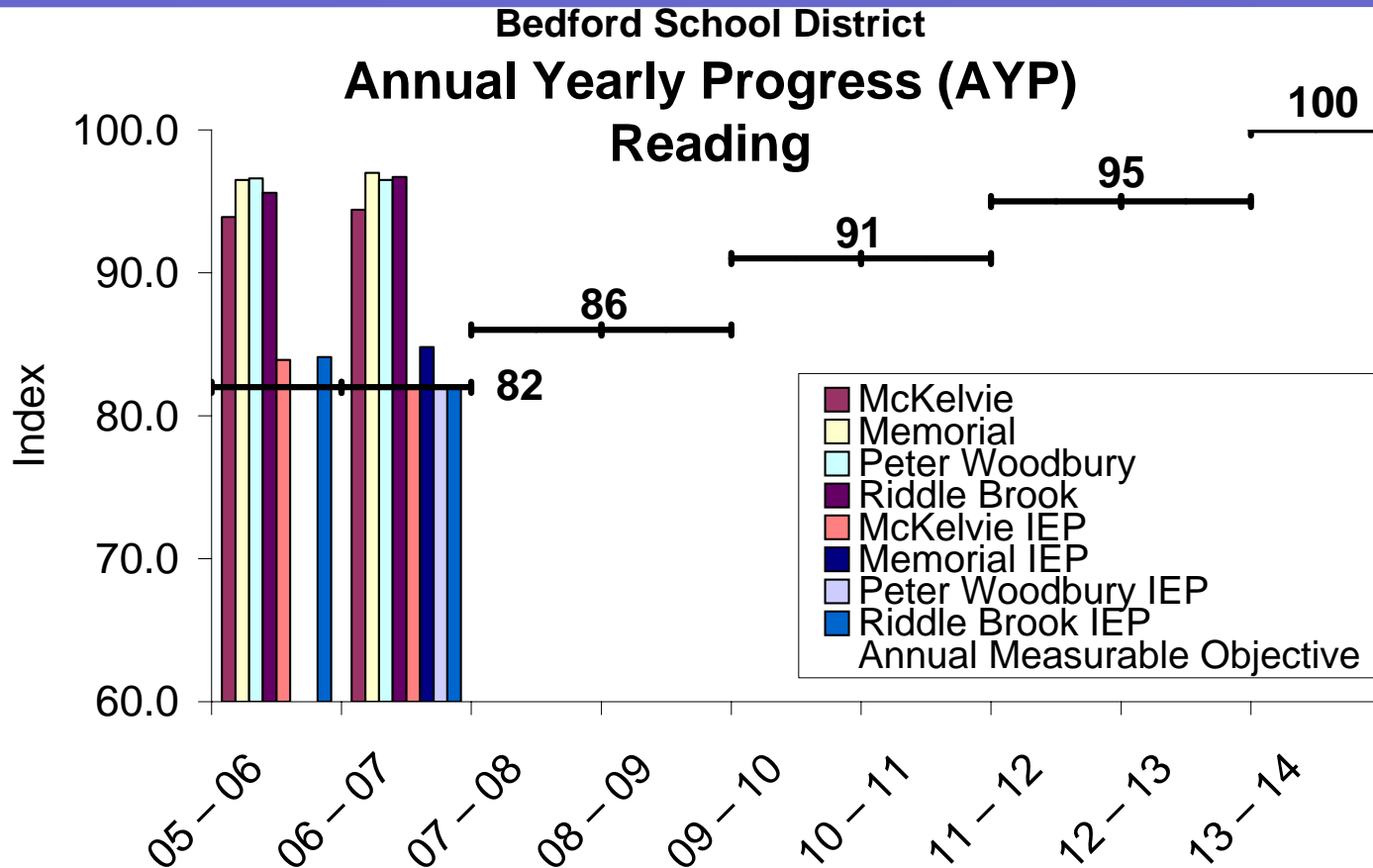
# School Measurable Goals

- Using a variety of assessment data to improve instruction
- Grade levels and/or pods annually:
  - review student assessment data and identify an area of weakness
  - establish goal that has specific student performance targets
- Regularly meet to discuss progress, share instructional strategies, problem solve
- Results are collected, analyzed and reported to building principals/superintendent

# NECAP Assessments

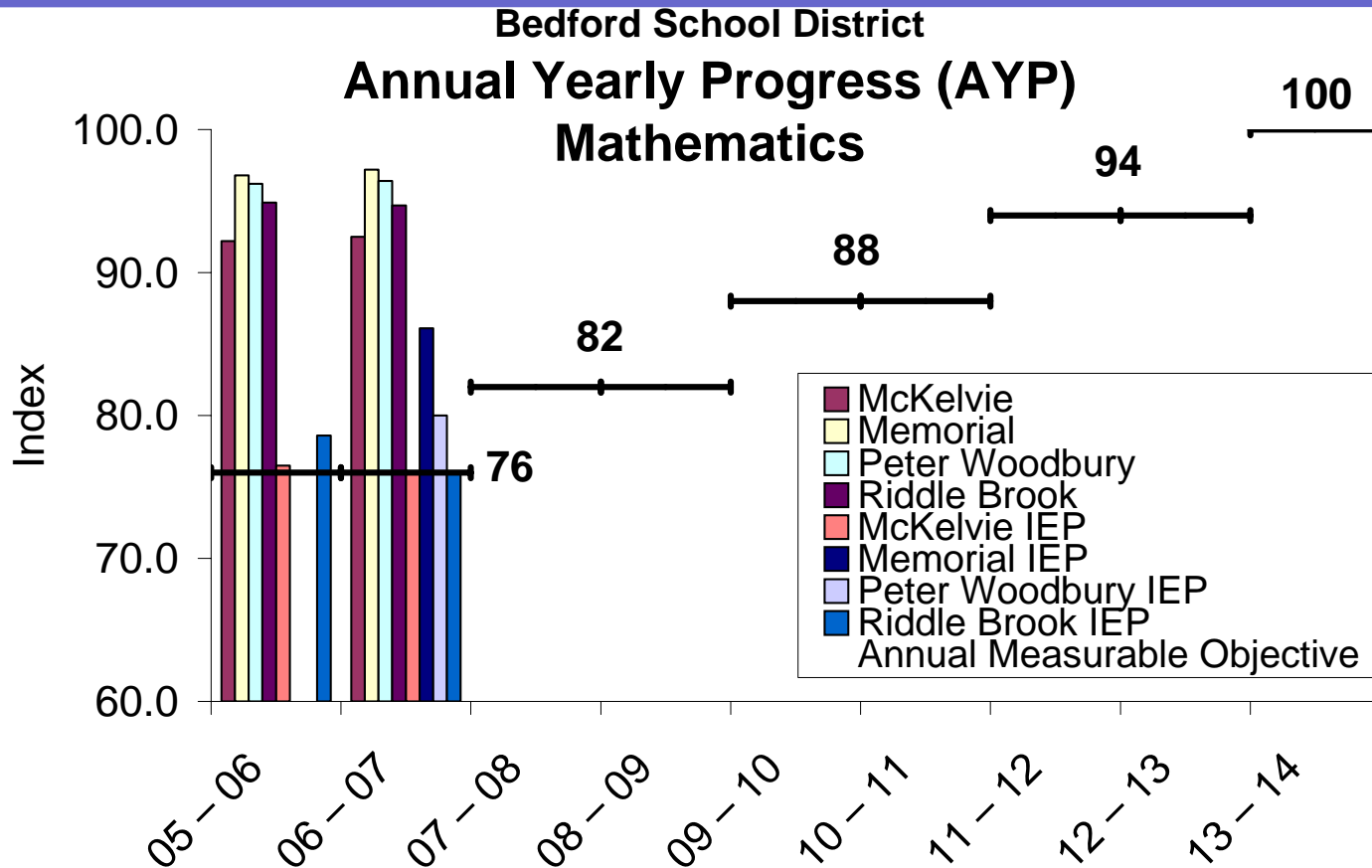
- Result of Federal No Child Left Behind Law
- New England Common Assessment Program (NECAP)
  - Mathematics and Reading Grades 3 through 8 (October)
  - Writing in Grades 5 and 8 (October)
- Adequate Yearly Progress (AYP):
  - For all subcategories of students, an increasing percentage must meet proficiency each year.
  - All subcategories must reach 100% proficient by 2014. Annual Measurable Objective increases every other year.
- For 06/07, all subcategories of students in all schools in Bedford made AYP.

# Annual Yearly Progress (AYP)



Note: All schools made AYP for all measured subgroups each year. Not all subgroups are shown. Some subgroups made AYP as a result of confidence intervals or the federal “2% rule.”

# Annual Yearly Progress (AYP)



Note: All schools made AYP for all measured subgroups each year. Not all subgroups are shown. Some subgroups made AYP as a result of confidence intervals or the federal “2% rule.”

# Parent Portal

- Web access to parents of students in grades 5-10
- Information available includes
  - Academic information/grades
  - Course competencies (BHS)
  - Attendance
  - Food service balances/menus
  - School and teacher notes
- Information is available for parents and students how to access Parent Portal at each school
- Sign up on District Web Site
  - [www.sau25.net](http://www.sau25.net)

# Security Assessment

- W.L. Bliss Associates, Inc.
- Public Report available on district website [www.sau25.net](http://www.sau25.net)
- Recommendations (within a year)
  - Establish district-wide safety and emergency planning committee and include police and fire
  - Expanded training for all staff
  - Improve district-wide communications and emergency notification

# Security Assessment

- Recommendations (within a year)
  - Implement district wide staff identification system
  - Implement “interim” visitor access control solutions
  - Standardize student dismissal/pick-up procedures
  - Improve the system to lock all perimeter doors during the school day
- Recommendations (within 1-3 years)
  - Improve perimeter and access control of schools
  - Install panic alarms at key locations at each school
  - Investigate the use of security cameras

# Lurgio Middle School Bedford High School Project

- Completed on time, on budget
- No Contingency
- Purchased used furniture, equipment
- Bonded all furniture, first year equipment, stadium grandstands
- Community partnerships
  - PTG
  - Bedford Education Foundation
  - Jr. Bulldog Pop Warner Assoc. built storage building

# MS/HS Project Impact

## Projected vs. Actual Tax Impact

<b>2005/06</b>	<b>2006/07</b>	<b>2007/08</b>
<b>\$0.05</b> <b>(\$0.09) (Actual)</b>	<b>\$0.97</b> <b>\$0.66 (Actual)</b>	<b>\$1.86</b>

Projections were made in January, 2005

# Bedford School District Historical Tax Rates

YEAR	TAX RATE	CHANGE
2001	\$13.83	\$1.01
2002	\$14.62	\$0.79
2003	\$14.54	(\$0.08)
2004	\$15.34	\$0.80
2005	\$12.14	(\$3.20)
2006	\$11.63	(\$0.51)
2007	\$12.41	\$0.78
2008	\$14.22	\$1.81 (14.6%)

Projected \$2.49 tax impact for 2008

# Bedford School District

## Factors in Lower Tax Impact

- \$200,000 surplus from operating budget
- Surplus revenues
  - Higher yield on investment on bond funds
  - Catastrophic special ed. aid
- Additional Adequate Education Aid

# Future Planning

## Curriculum / Professional Development

- **Writing**
  - Focus of 2007/08 Professional Development
  - Seeking Consensus on Instructional Methodology
  - Measurable goals
- **High School Competencies**
  - Defined for each BHS Course
  - Staff developing common assessments
  - Required by 2009 for all NH high schools
- **International Baccalaureate**
  - Elective Program for Junior & Seniors
  - Common Assessments w/standard international scorers

# Future Planning

Improved Access to MS / HS

## Criteria

- Emergency access
- Safe access / egress of student traffic to/from middle school / high school site
- Maximize value / minimize expenditure
- Provide access to a signalized intersection on Rt. 101 (existing or future)
- Minimize traffic on neighborhood roads

# Future Planning

Improved Access to MS / HS

## Options

- Driveway to Wallace Rd.
- Driveway through Chestnut Drive to Rt. 101 w/signal
- Signalized Intersection at Nashua Rd. /Rt. 101
  - Emergency (gated) access via Chestnut Drive
  - Additional eastbound lane from Wallace Rd. beyond Meetinghouse Rd.

# Future Planning

McKelvie Building / Site Study

- **Building/Site Study**
  - Use, organization or building
  - Traffic flow on site
  - Mechanical, electrical, window/wall systems
- **Include Security Assessment Recommendations**
- **Complete Study by April/May**
- **Used for Future Capital Planning**

# Evolution of a District

- Tremendous Change ... Tremendous Opportunity
- Everyone in the district is in a different location
- Many are working in new schools, with new peers, leaders
- Learning Community ... Building a Good Foundation
- Mid-Course Corrections ... “Tweaking”

# State of the District

**Questions**